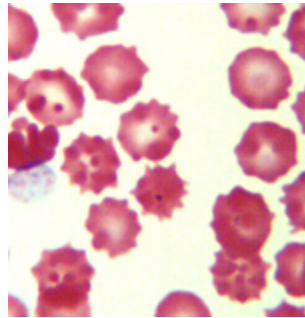
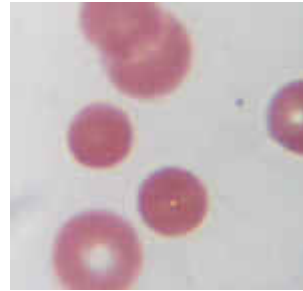


Can you identify the problem in peripheral blood smears (below)?

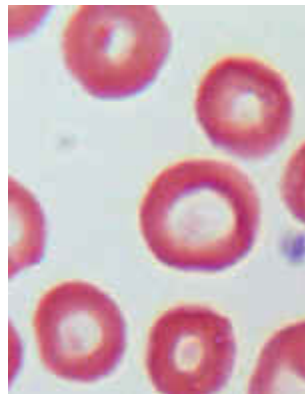
See how the echinocytosis (crenation) obscures normal erythrocyte morphology?



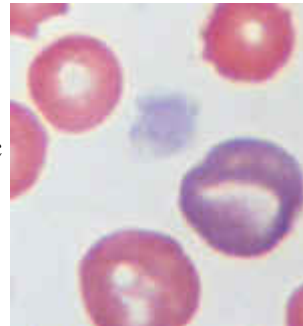
Spherocytes



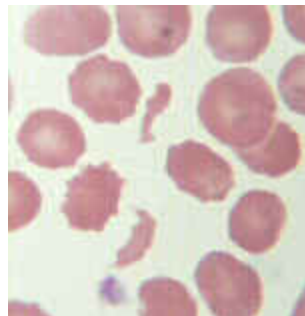
Smear made from stored blood Fresh blood smear



Polychromatophilic RBC



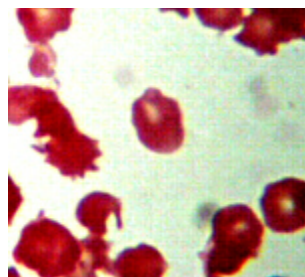
Schistocytes



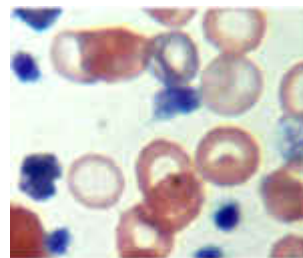
Eccentricocytes



Heinz bodies



Microcytic hypochromic RBCs



Babesia

